

**IN THE COMMISSIONERS COURT
OF
RED RIVER COUNTY, TEXAS**

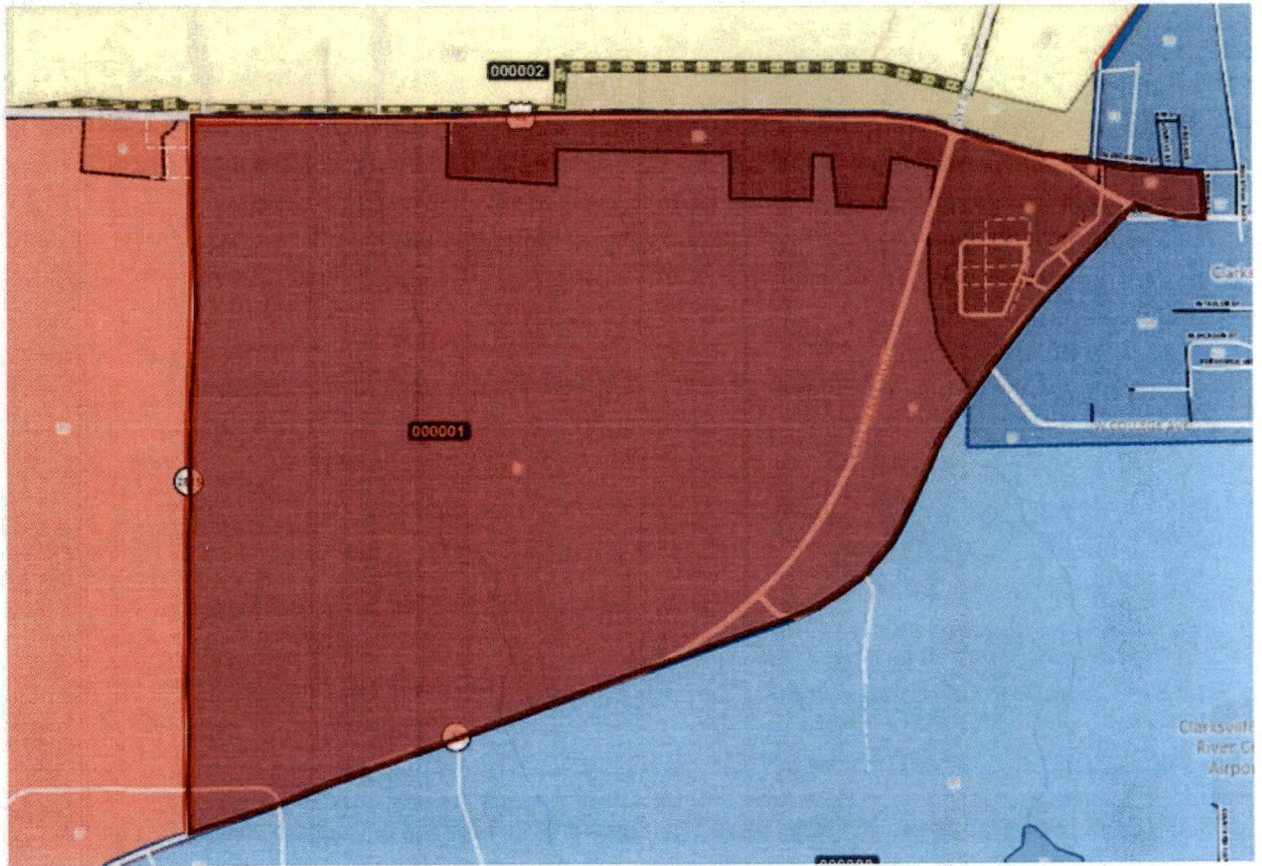
**ORDER CONFORMING ELECTION PRECINCTS
TO REVISED COMMISSIONERS COURT PRECINCTS**

BE IT REMEMBERED, that on the 27th day of December, 2021, the Commissioners Court of Red River County, Texas, adopted revised boundaries for its Commissioners Court precincts, pursuant to Article V, Section 18 of the Texas Constitution, §81.021 of the Texas Local Government Code, and Chapter 42 of the Texas Election Code.

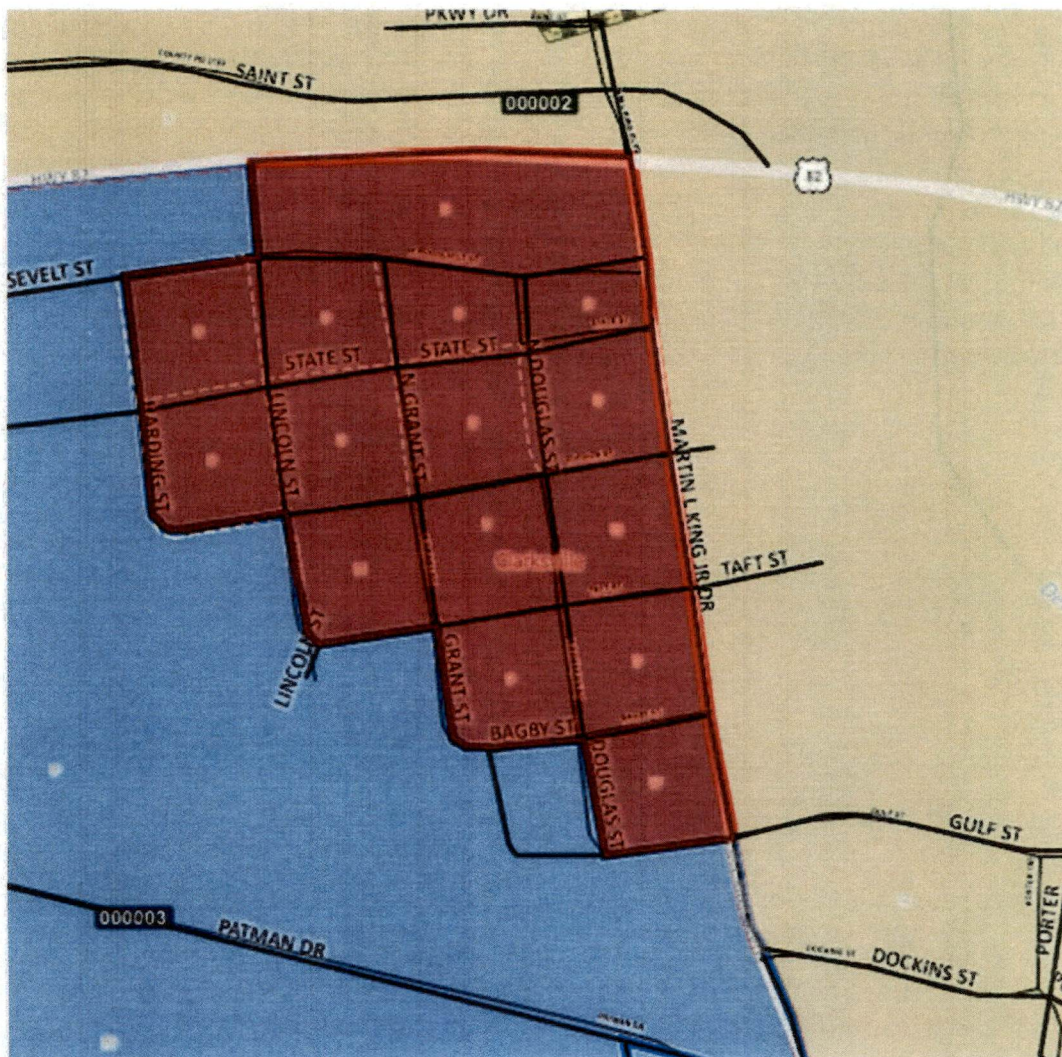
Pursuant to the provisions of Chapter 42, Texas Election Code, the Commissioners Court hereby approves the realignment of County Election Precincts to conform to the newly revised and adopted boundaries of the four Commissioners Court Precincts:

In the map depictions of election precincts below, the purple lines are former boundaries, red lines are new boundaries. Former election precinct territory may appear in red type, new election precinct numbers in a black box with white letters.

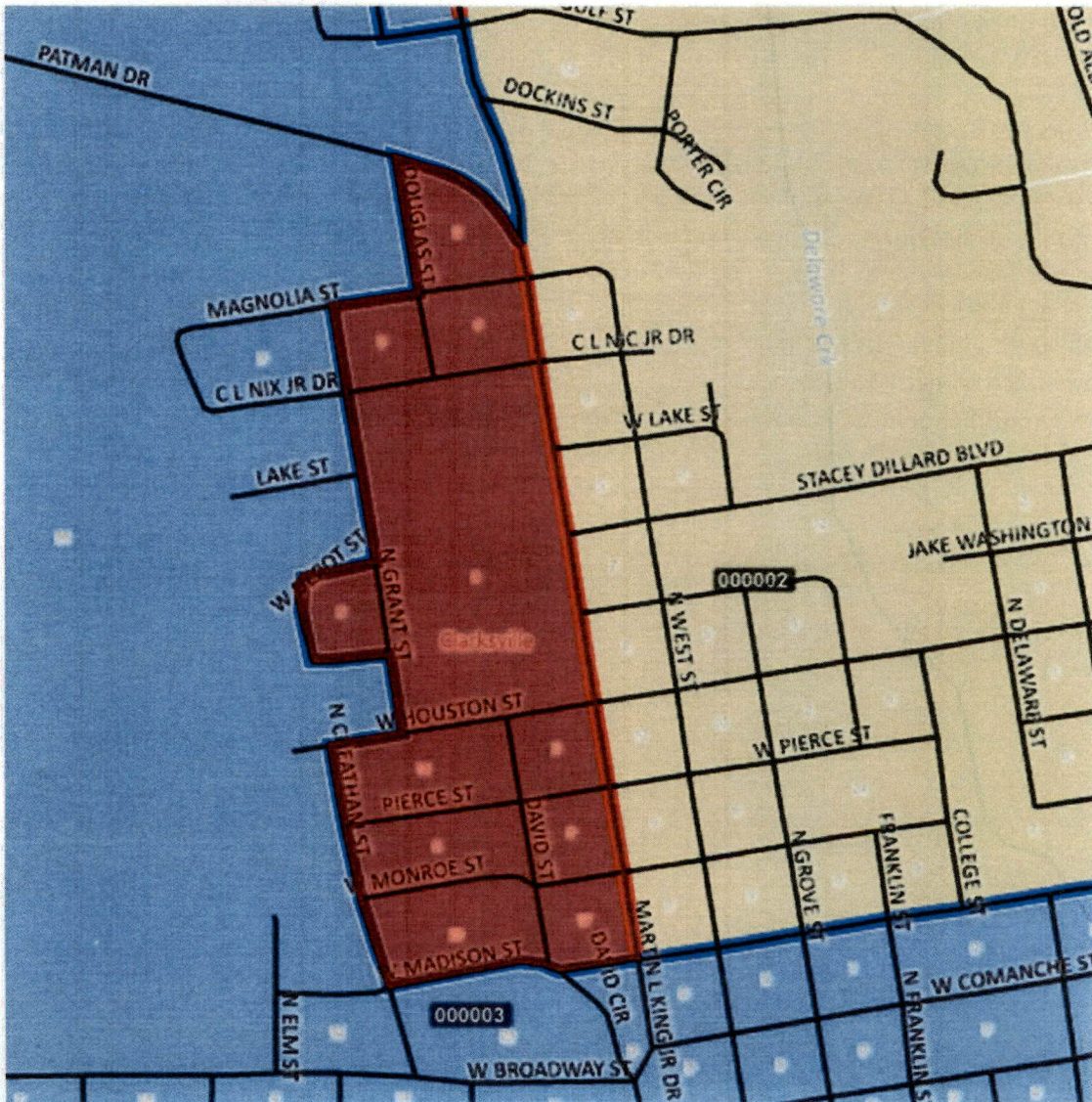
1. Election Precinct 1 and 3 were modified by the redistricting of Commissioners Court Precincts, to move territory formerly in Election Precinct 1 into Election Precinct 3, with the area bounded on the west, beginning at a point of intersection with the centerline of FM 2825 and the centerline of Texas Hwy 37; thence north along FM 2825 to a point of intersection with the centerline of U.S. Hwy 82; thence along the centerline of U.S. 82 to a point of intersection with the centerline of Thompson Rd.; thence north to a point of intersection with the centerline of W. Broadway St.; thence east along W. Broadway to a point of intersection with the centerline of N. Spring St.; thence south on N. Spring St. to a point of intersection with the centerline of W. Main (Hwy. 37); thence west along W. Main to a point of intersection with the centerline of Hwy 37 south; thence southerly along Hwy 37 to the point of beginning, as depicted on the attached map.



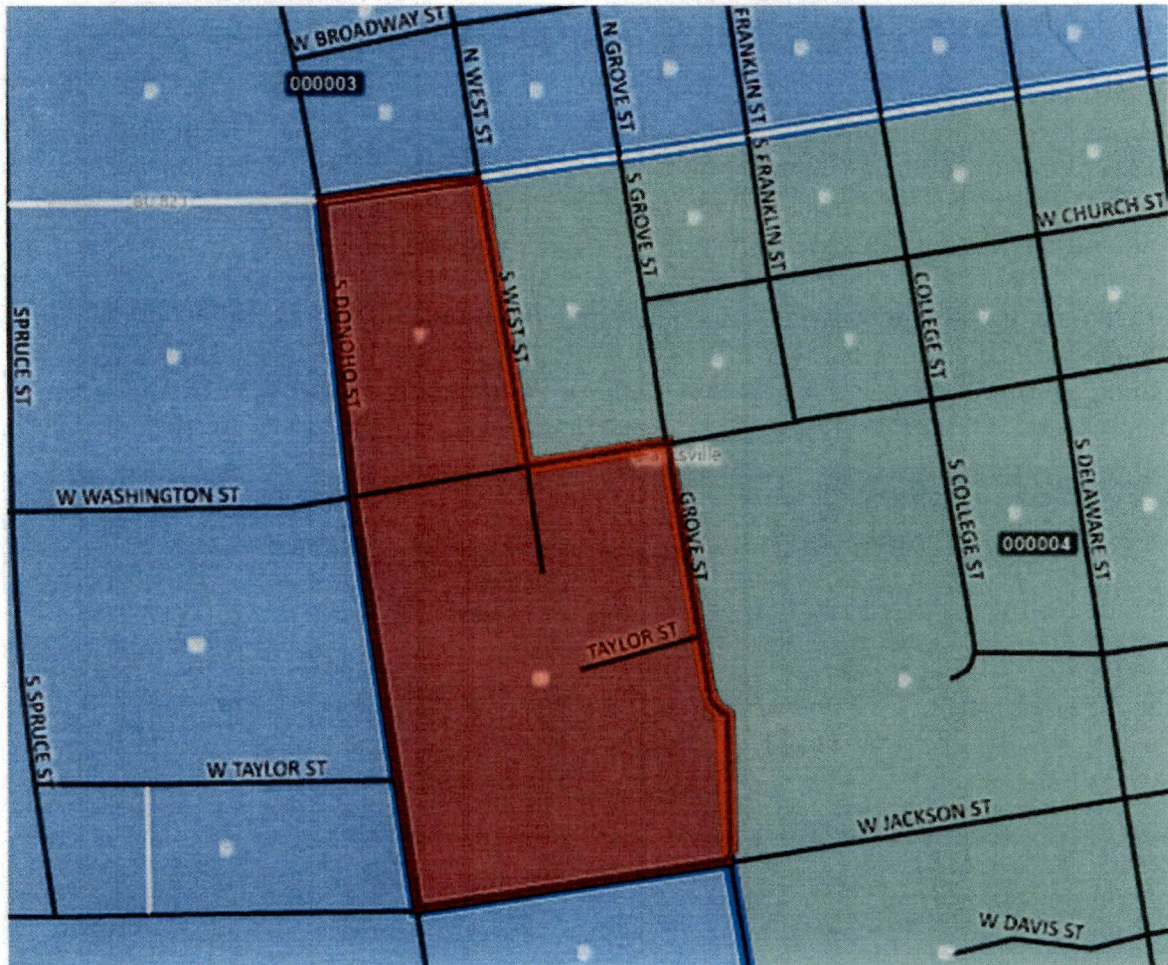
2. Election Precinct 2 and 3 were modified by the redistricting of Commissioners Court Precincts, to move territory formerly in Election Precinct 2 into Election Precinct 3, with the area bounded on the north, beginning at a point of intersection with the centerline of U.S. 82 with the centerline of Martin L. King, Jr. Blvd.; thence west along the centerline of US 82 a distance of approximately 706 feet, to a point of intersection with an extended centerline of Lincoln St.; thence south along said extended centerline of Lincoln St. to a point of intersection with the centerline of W. Roosevelt St.; thence west along W. Roosevelt St. to a point of intersection with the centerline of Harding St.; thence south along Harding St. to a point of intersection with the centerline Division St.; thence east along Division St. to a point of intersection with the centerline of Lincoln St.; thence south along Lincoln St. to a point of intersection with the centerline of Taft St.; thence east along Taft St. to a point of intersection with the centerline of Grant St.; thence south on Grant to a point of intersection with Bagby St.; thence east along Bagby St to a point of intersection with the centerline of Douglas St.; thence south along Douglas St. to a point of intersection with the centerline of Gulf St.; thence east along Gulf St. to a point of intersection with Martin L. King, Jr. Blvd.; thence north along Martin L. King, Jr. Blvd. to the point of beginning, as depicted on the attached map.



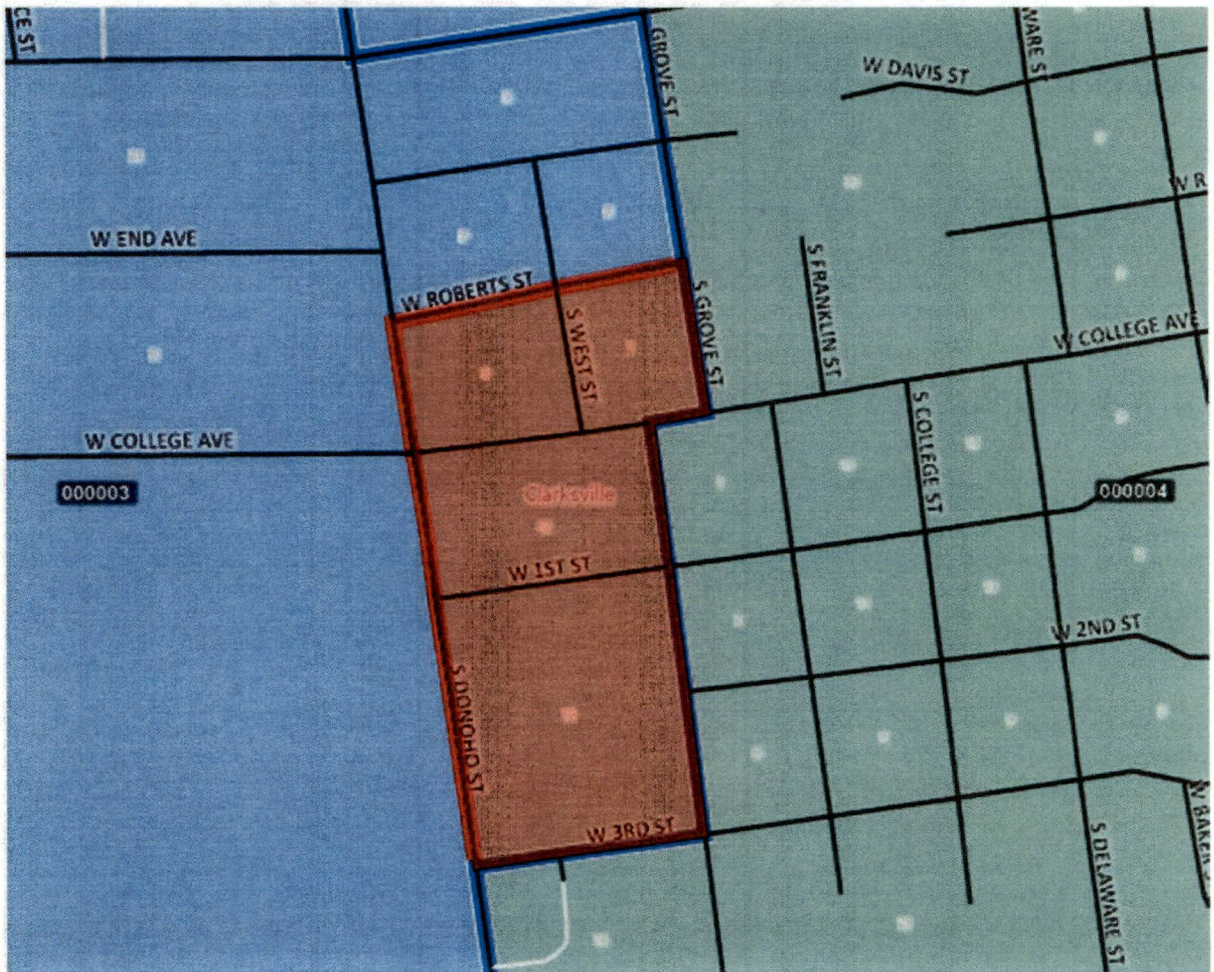
3. Election Precinct 2 and 3 were modified by the redistricting of Commissioners Court Precincts, to move territory formerly in Election Precinct 2 into Election Precinct 3, with the area bounded on the north, at a point of intersection of the centerline of Martin L. King, Jr. Blvd. with the centerline of Patman Dr.; thence northward along Patman Dr. to a point of intersection with the centerline of Douglas St.; thence south along Douglas St. to a point of intersection with the centerline of Magnolia St.; thence west along Magnolia St. to a point of intersection with N. Grant St.; thence south along N. Grant St. to a point of intersection with the centerline of W. Depot St; thence west along W. Depot Street to a point of intersection with the centerline of W. Rusk St.; these south and east along W. Rusk St. to a point of rejoinder with the centerline of N. Grant St.; thence south along N. Grant St. to a point of intersection with the centerline of N. Houston St.; thence west along W. Houston St. to a point of intersection with the centerline of N. Cheatham St.; thence south along N. Cheatham St. to a point of intersection with W. Madison St.; thence east along W. Madison St. to a point of intersection with Martin L. King, Jr. Blvd.; thence north along Martin L. King, Jr. Blvd. to the point of beginning, as depicted on the attached map.



4. Election Precinct 3 and 4 were modified by the redistricting of Commissioners Court Precincts, to move territory formerly in Election Precinct 4 into Election Precinct 3, with the area bounded on the north at the point of intersection with the centerline of S. West St and the centerline of Business Hwy 82; thence west along Business Hwy 82 to a point of intersection with S. Donoho St.; thence south along S. Donoho St to a point of intersection with the centerline of W. Jackson St.; thence east along W. Jackson St. to a point of intersection with the centerline of Grove St.; thence north along the Grove St. to a point of intersection with the centerline of W. Washington St., thence east along W. Washington St. to a point of intersection with S. West St.; thence north along S. West St to the point of beginning, as depicted on the attached map.

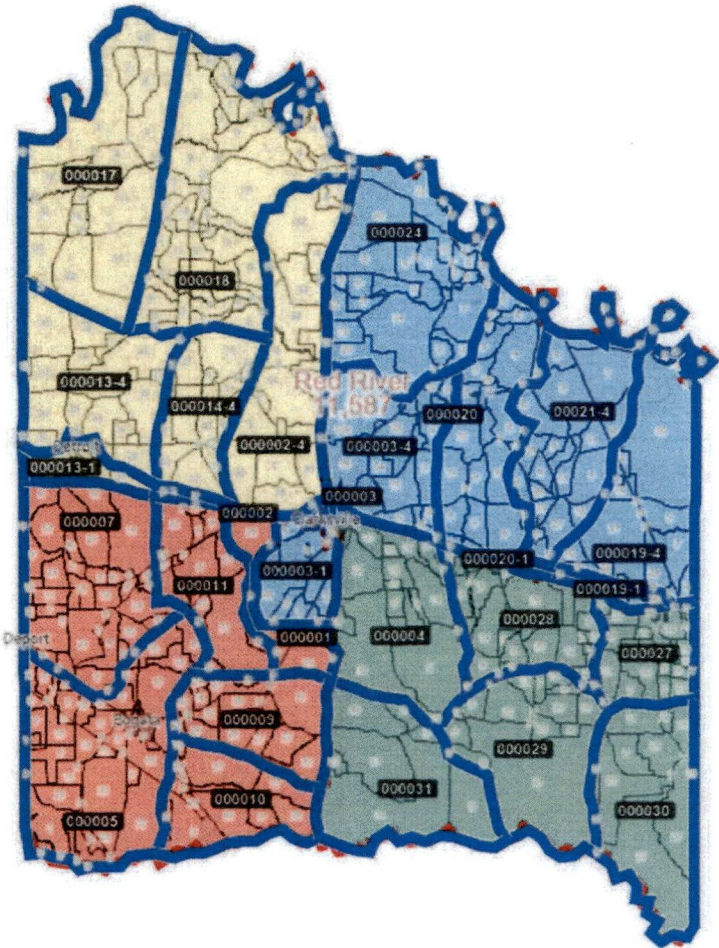


5. Election Precinct 3 and 4 were modified by the redistricting of Commissioners Court Precincts, to move territory formerly in Election Precinct 3 into Election Precinct 4, with the area bounded on the north, at a point of intersection of the centerline of S. Grove St. with the centerline of W. Roberts St.; thence west along W. Roberts to a point of intersection with the centerline of S. Donoho St.; thence south along S. Donoho St. to a point of intersection with the centerline of W. 3rd St.; thence east along W. 3rd St. to a point of intersection with the centerline of S. Grove St.; thence north along S. Grove St. to a point of intersection with the centerline of W. College Ave.; thence east along W. College to rejoiner with the centerline of S. Grove St.; thence north to the point of beginning, as depicted on the attached map.

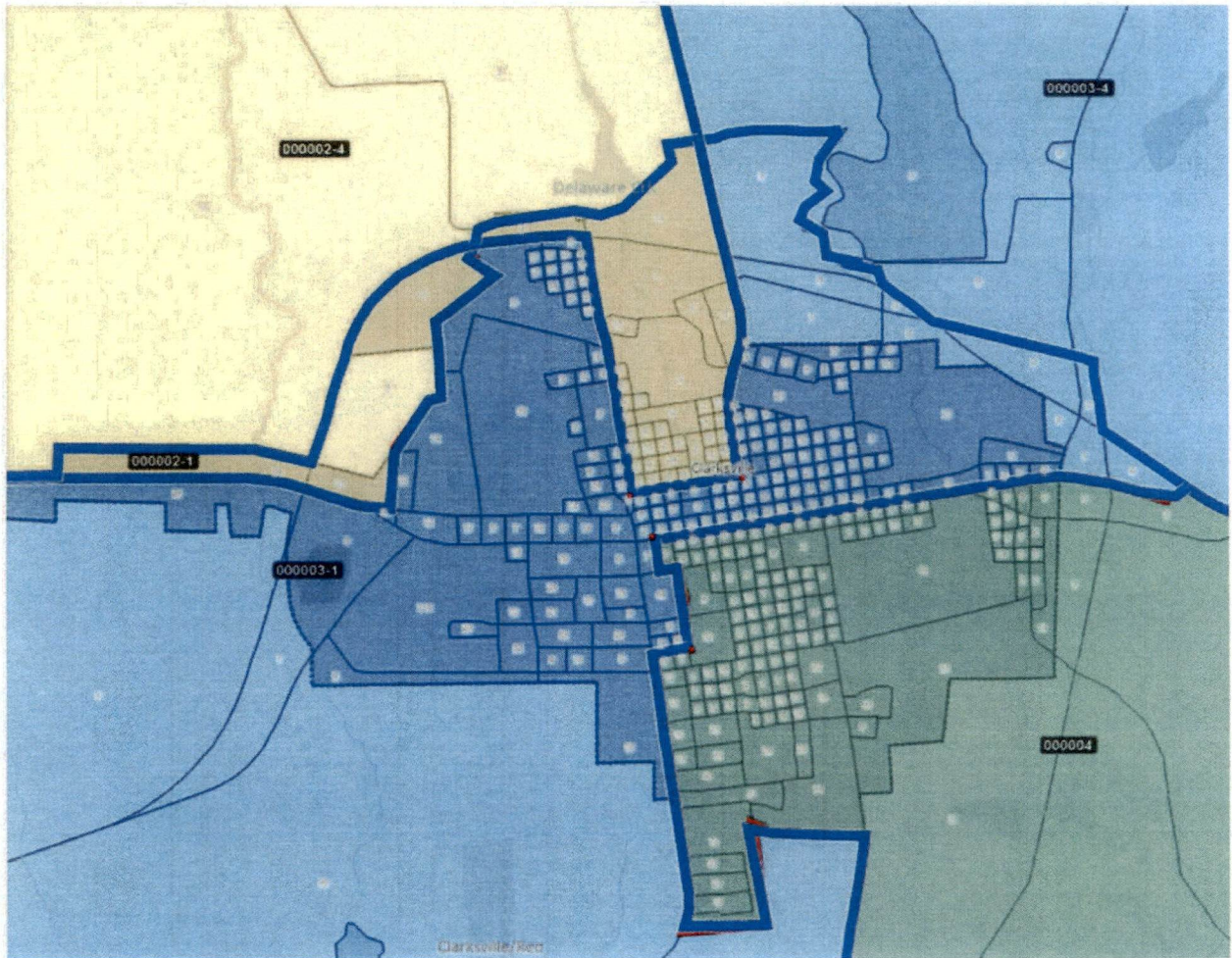


To the extent that any of the foregoing revised election precincts contain territory inside a city with unincorporated territory outside of the affected city, the Commissioners Court, pursuant to §42.007 (1) and (2), finds that either of the two areas (within and without the incorporated city) cannot constitute a separate election precinct of suitable size or shape that contains the permissible number of voters, or cannot be combined with other territory on the same side of the city boundary to form an election precinct of a suitable size or shape that contains the permissible number of voters without causing another election precinct to fail to meet those requirements. The Commissioners Court delegates sufficient discretion to the Office of Elections Administration to make such boundary adjustment to said election precincts to facilitate the effective administration of elections, and to pose the least inconvenience to the voters of the affected election precincts.

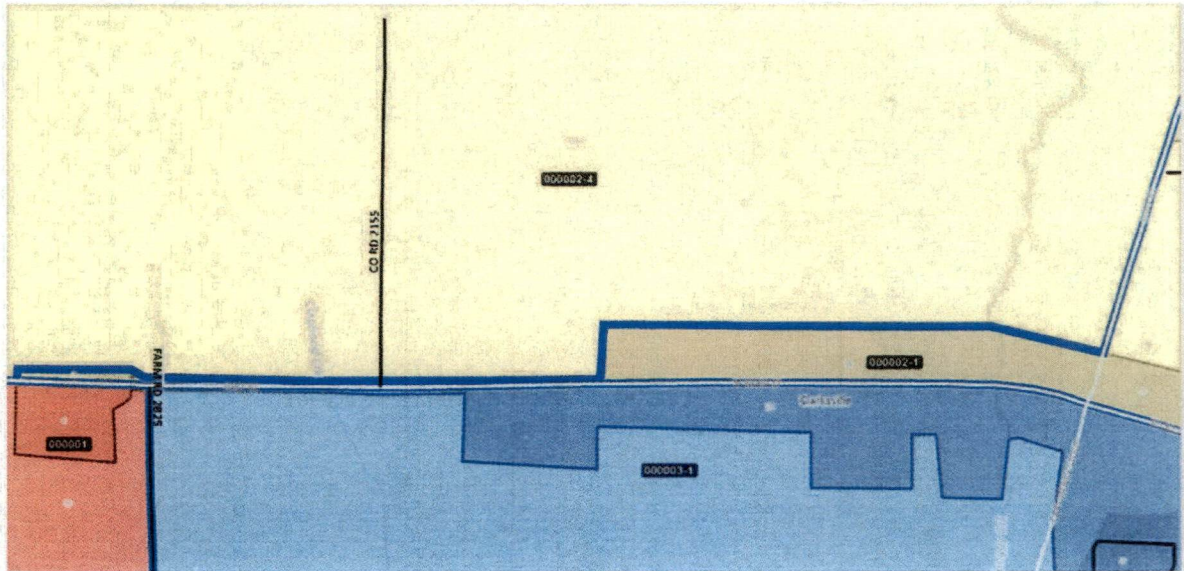
Commissioner's Court in color, Election Precincts outlined in blue



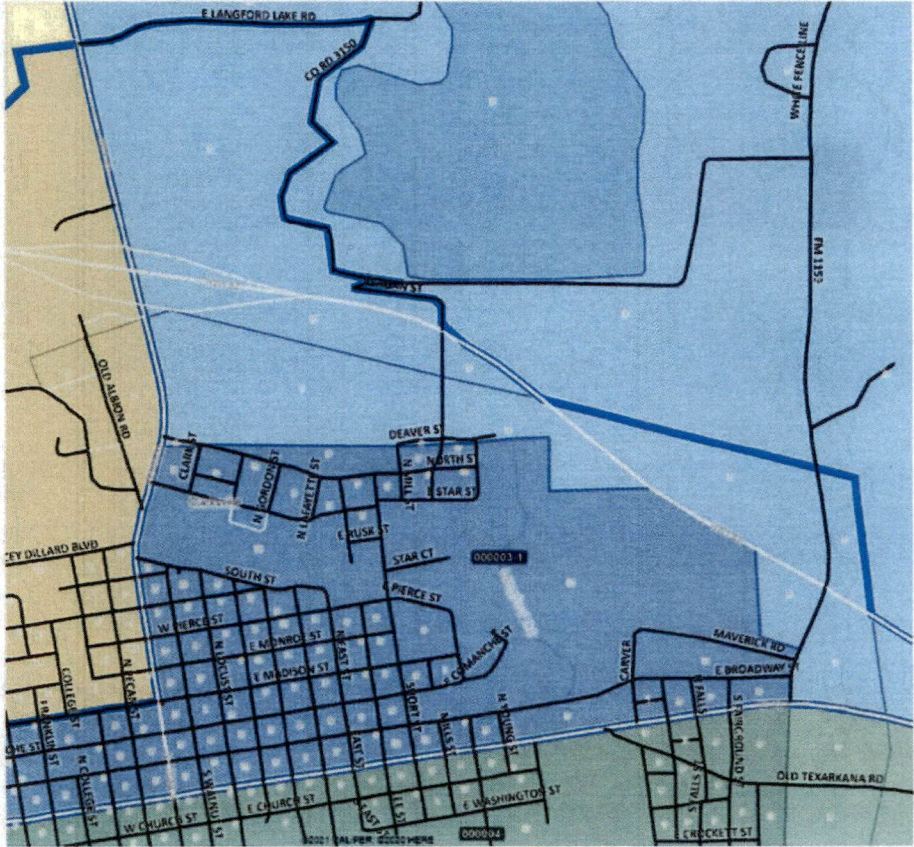
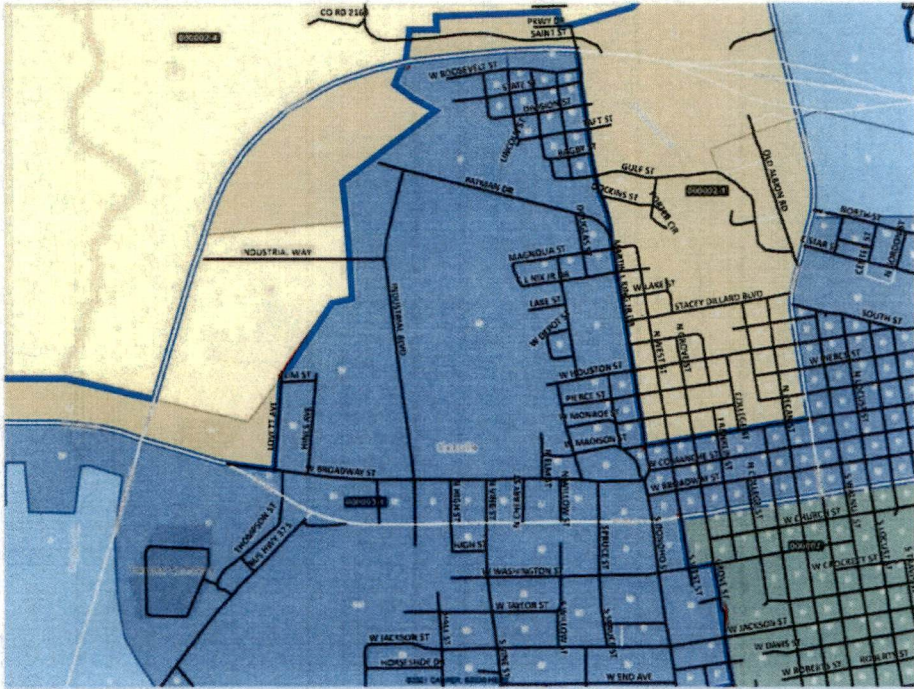
Commissioners Court in color, Election Precinct outlined in blue (Clarksville)



Election Pct. 2-1 in Clarksville



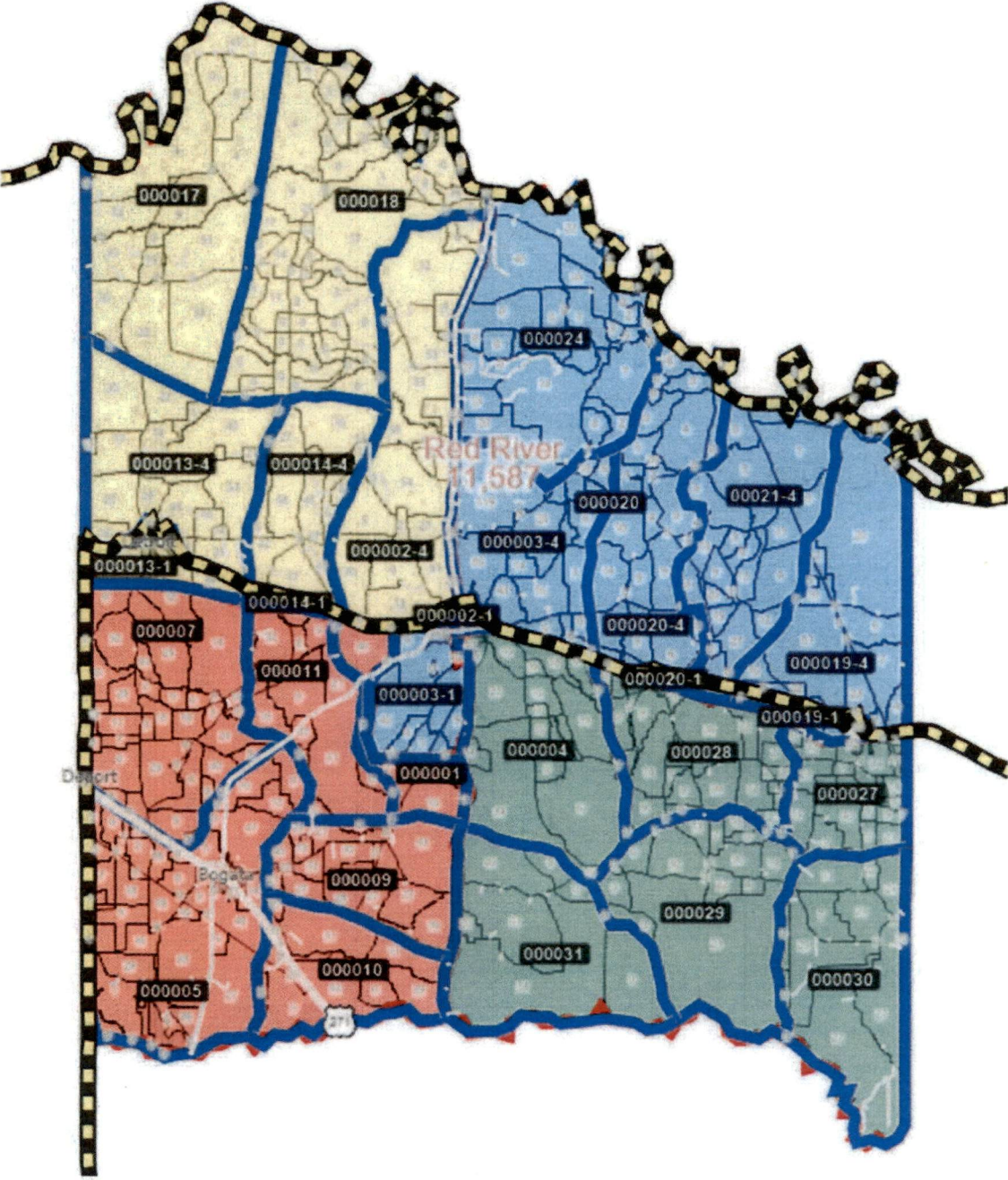
Election Precinct 3-1 in Clarksville



Election Precinct 4 in Clarksville

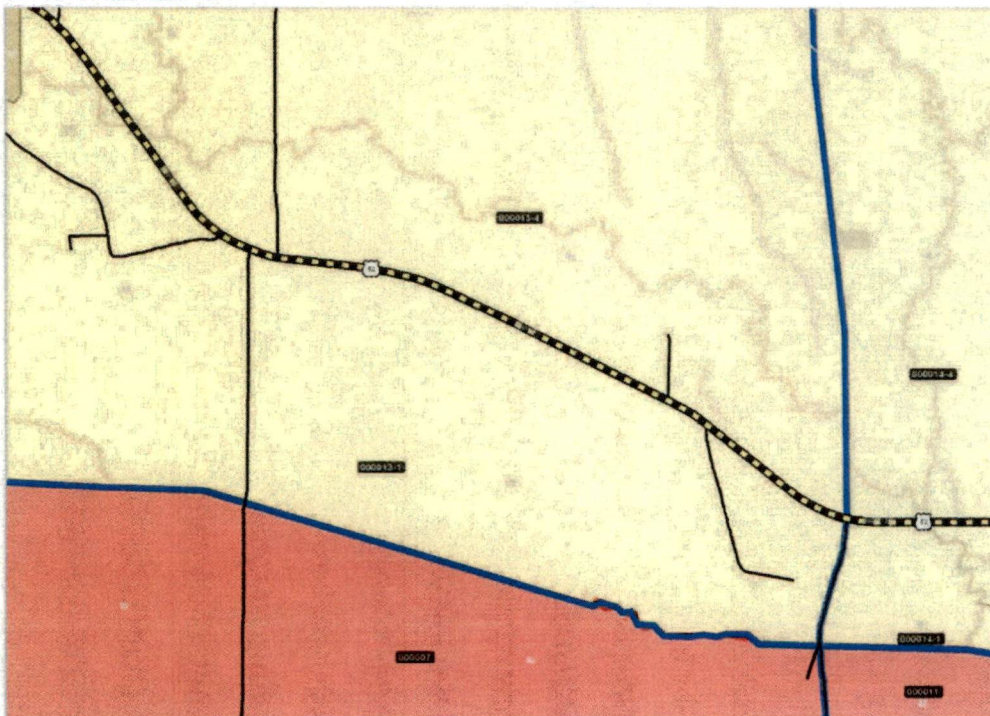
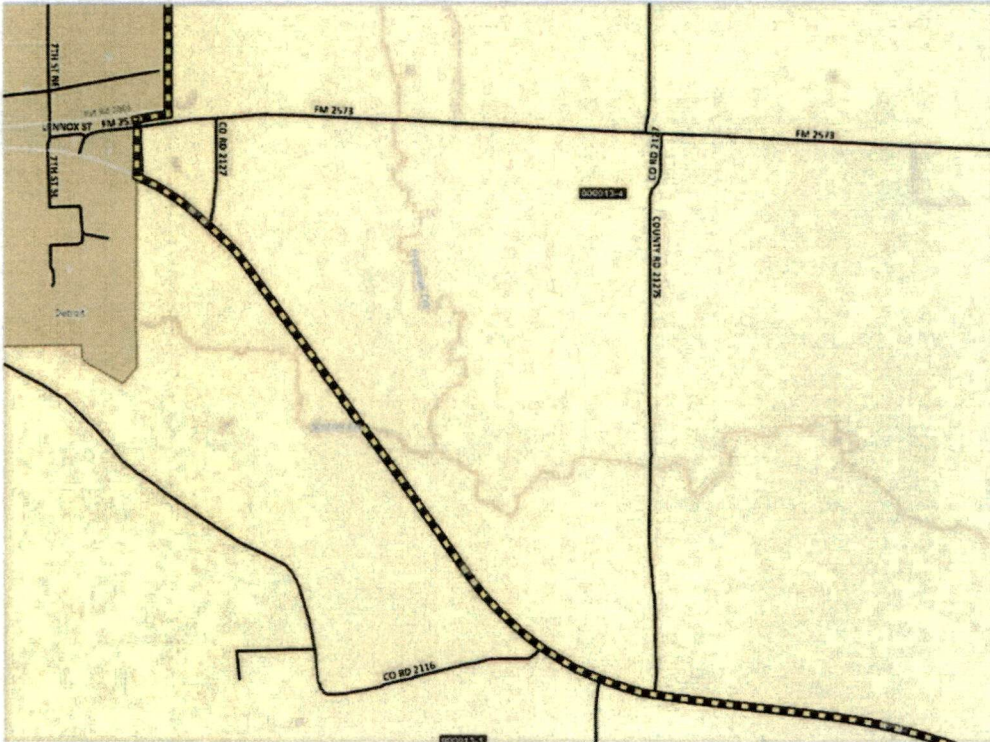


Congressional Districts 1 and 4 split Red River County: Election precincts are split, with that territory south of the yellow-black line in Congressional District 1, and that territory north in Congressional District 4. Maps track west to east.

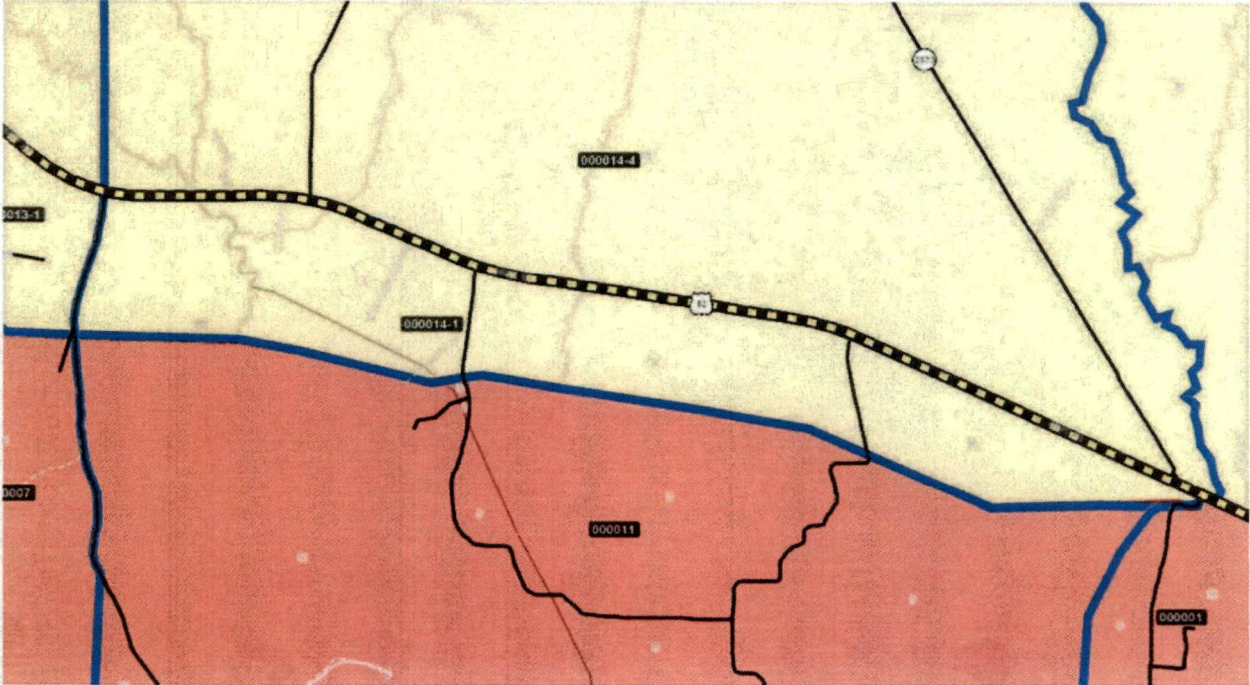


Election Precinct 13-1 and 13-4:

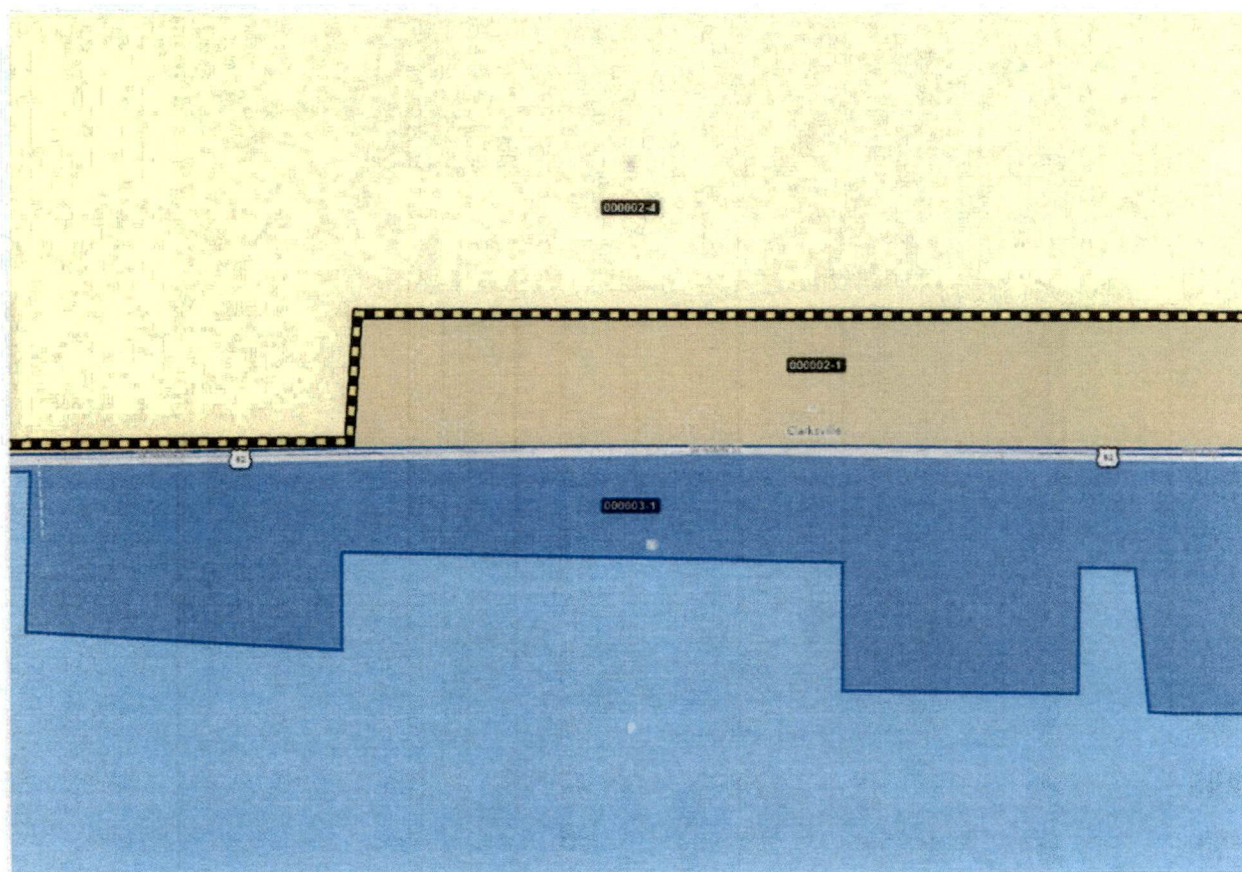
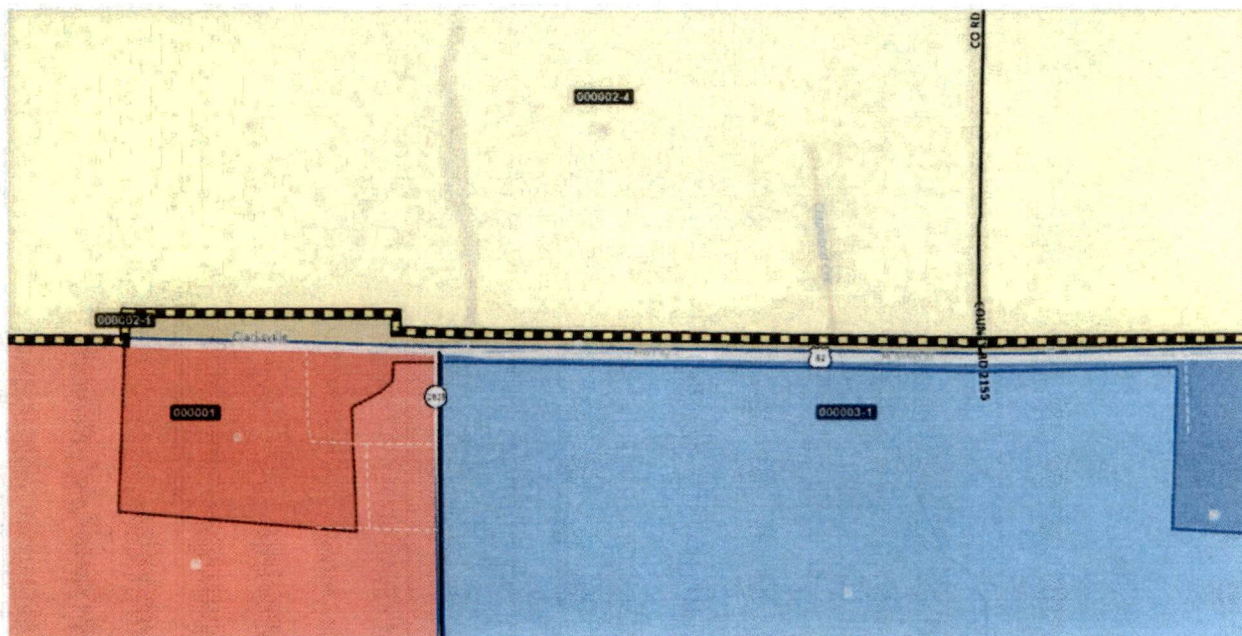


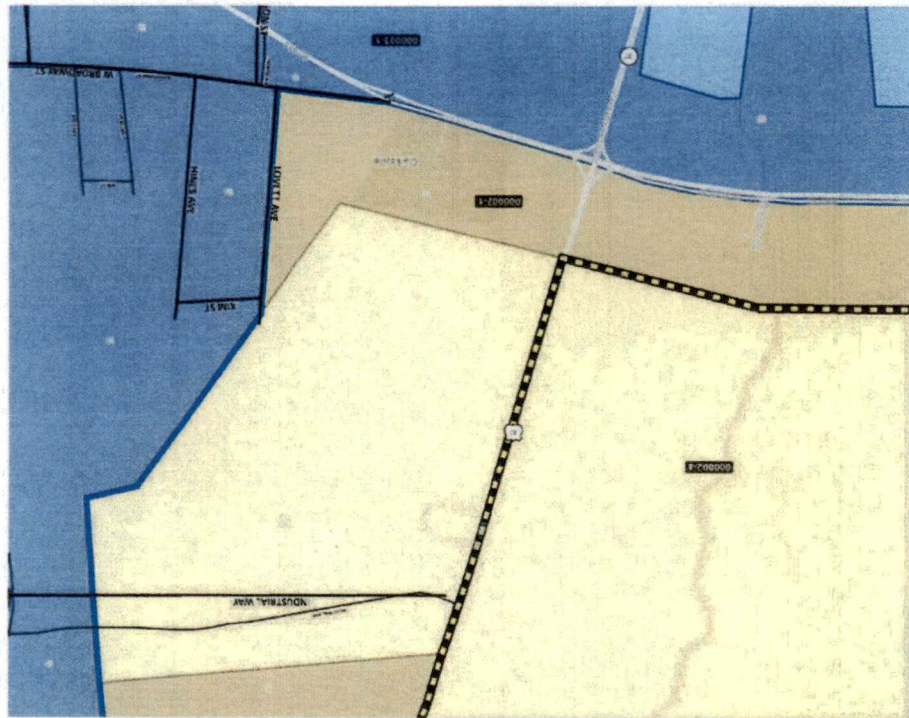
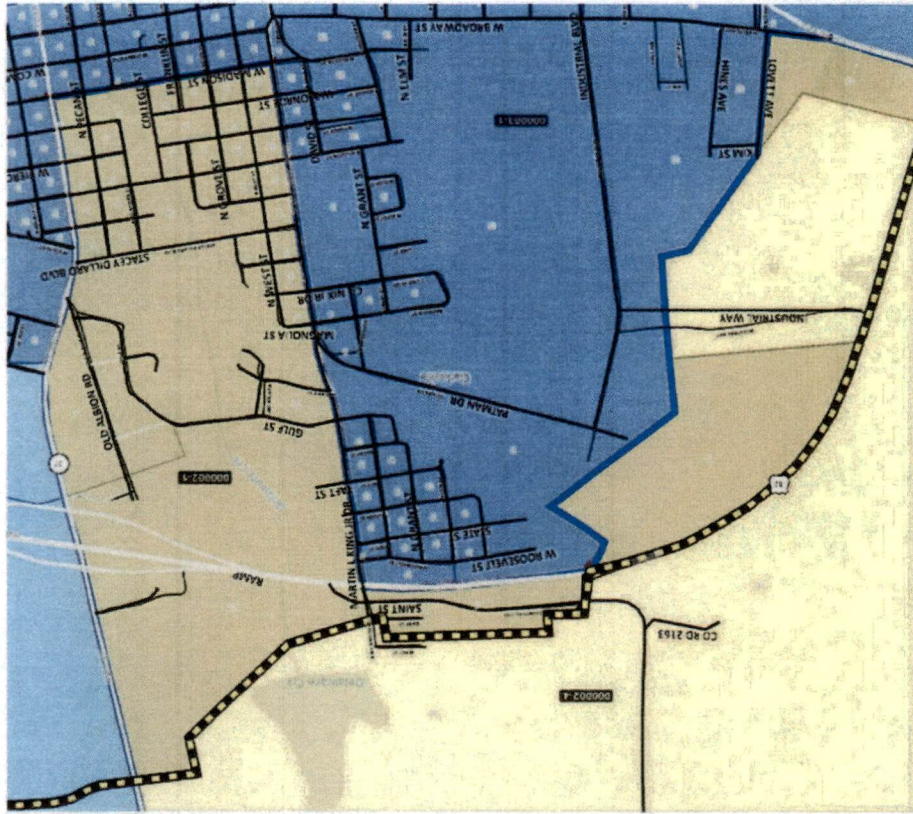


Election Precinct 14-1 and 14-4:

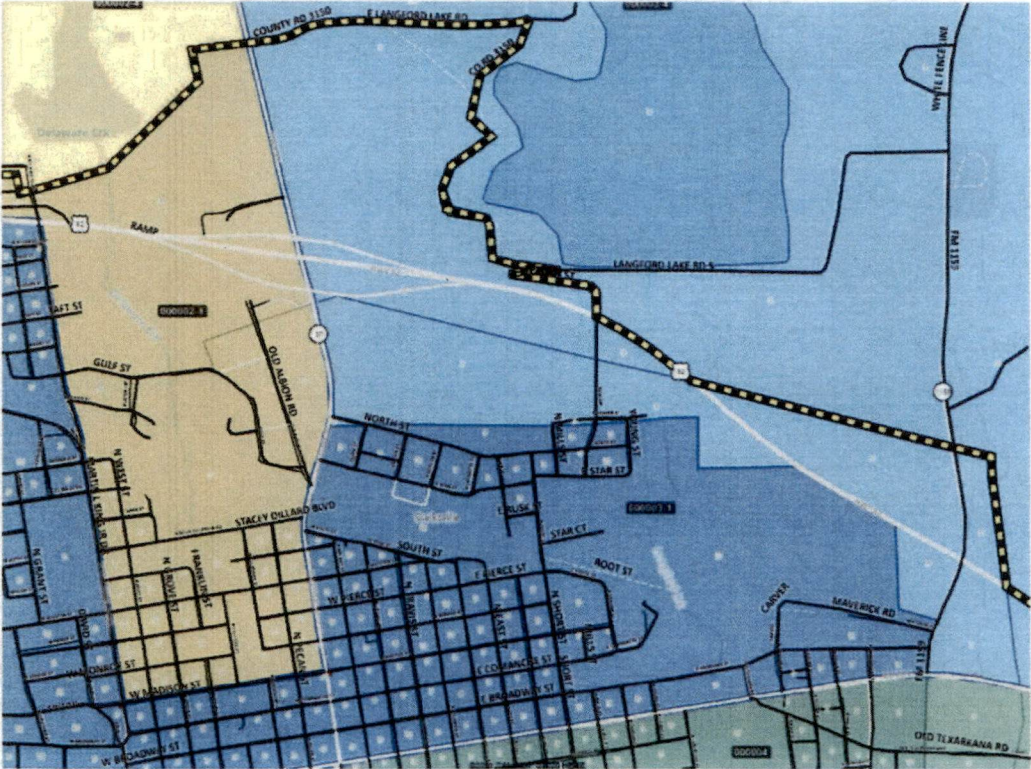


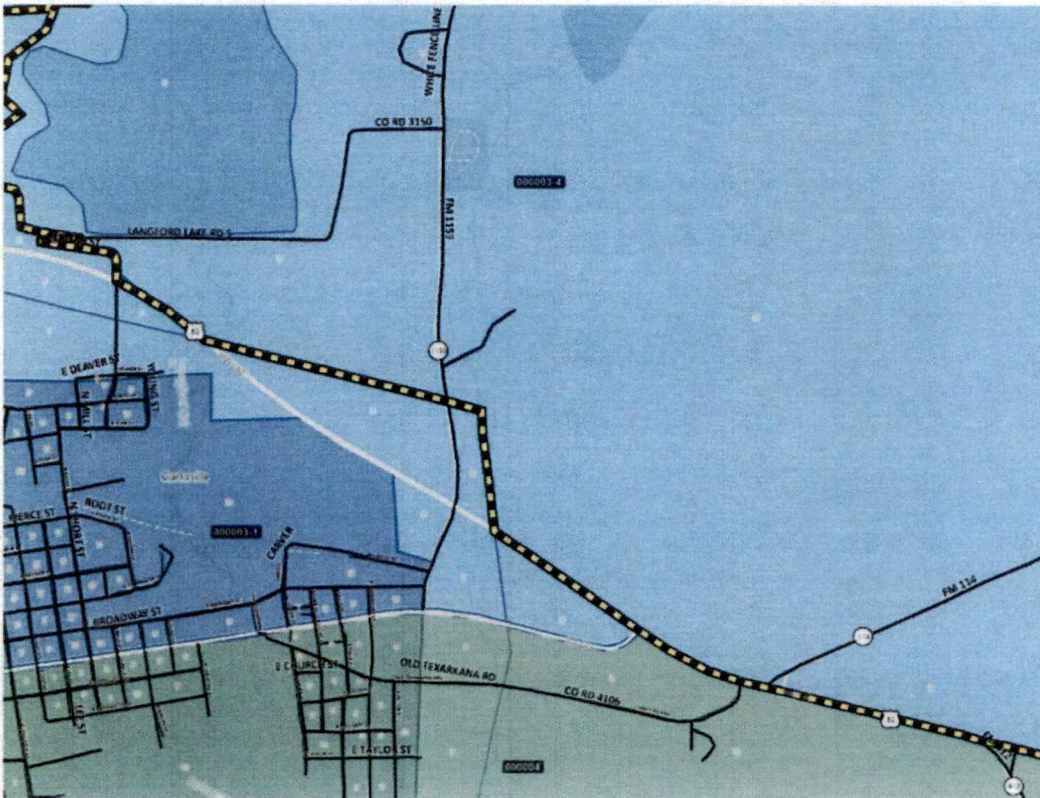
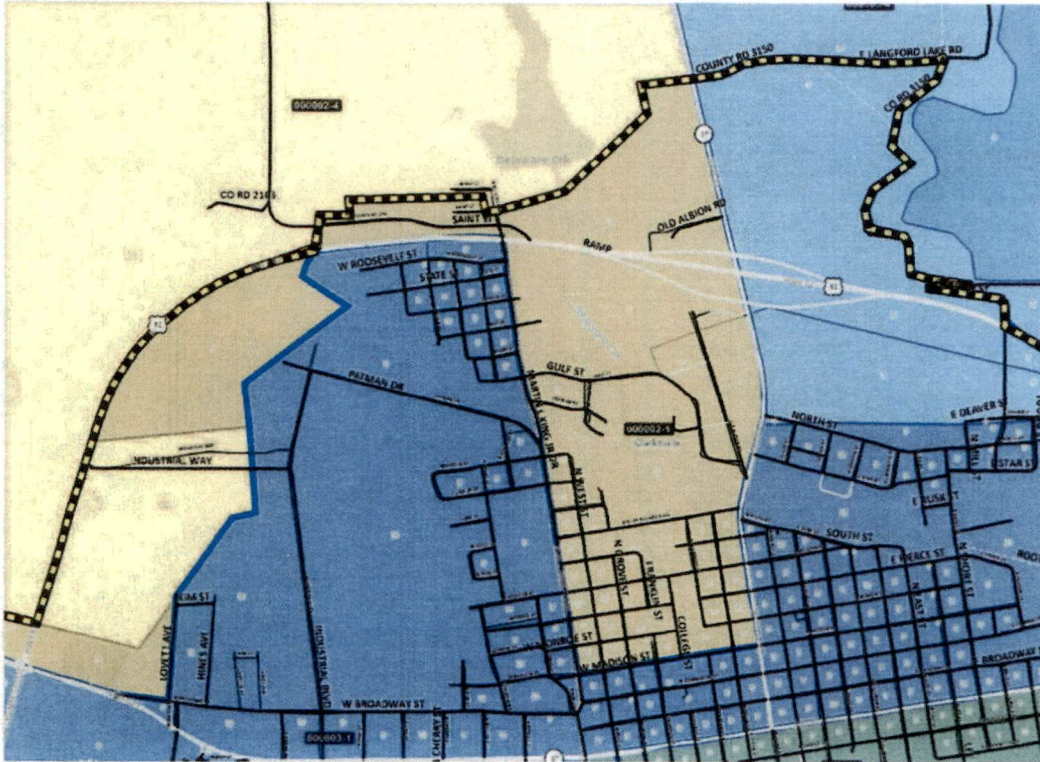
Election Precinct 2-1 and 3-4 in Clarksville



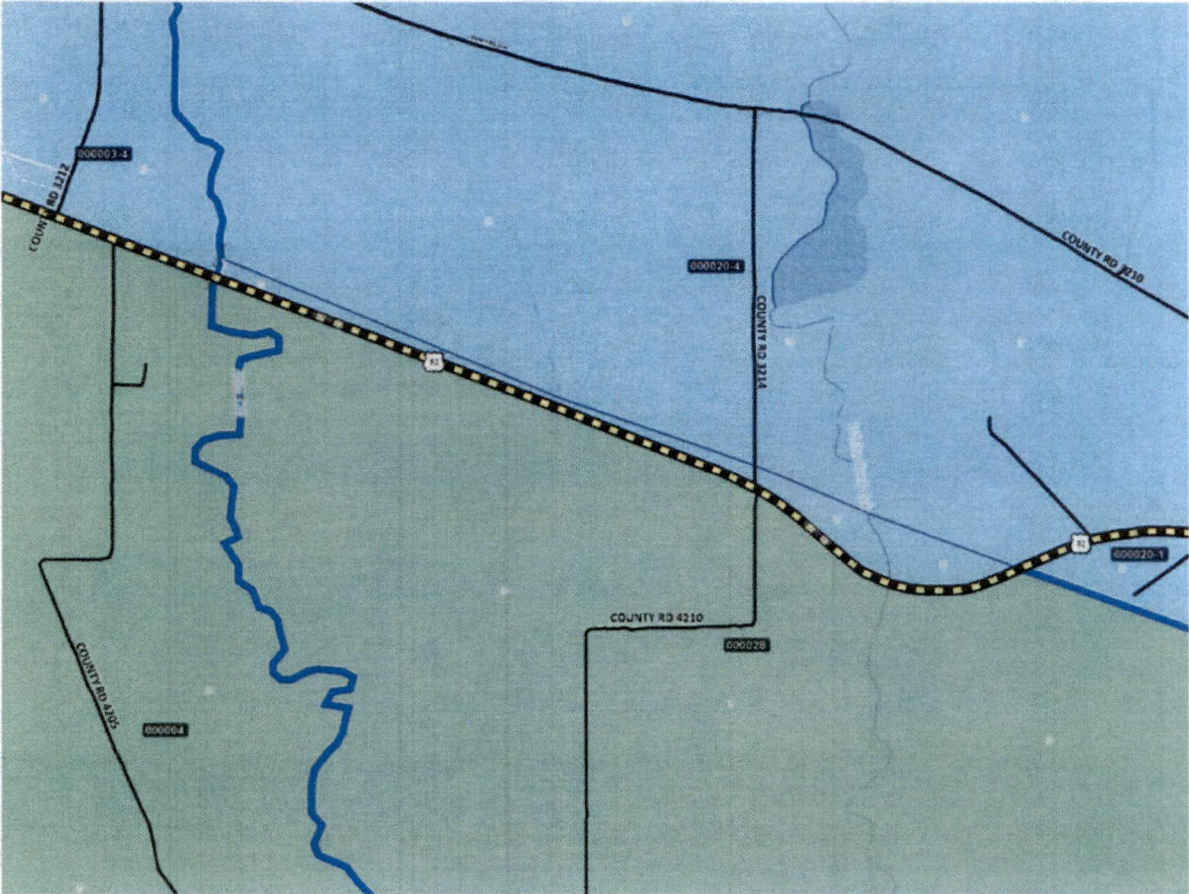


Election Precinct 3 in Clarksville:

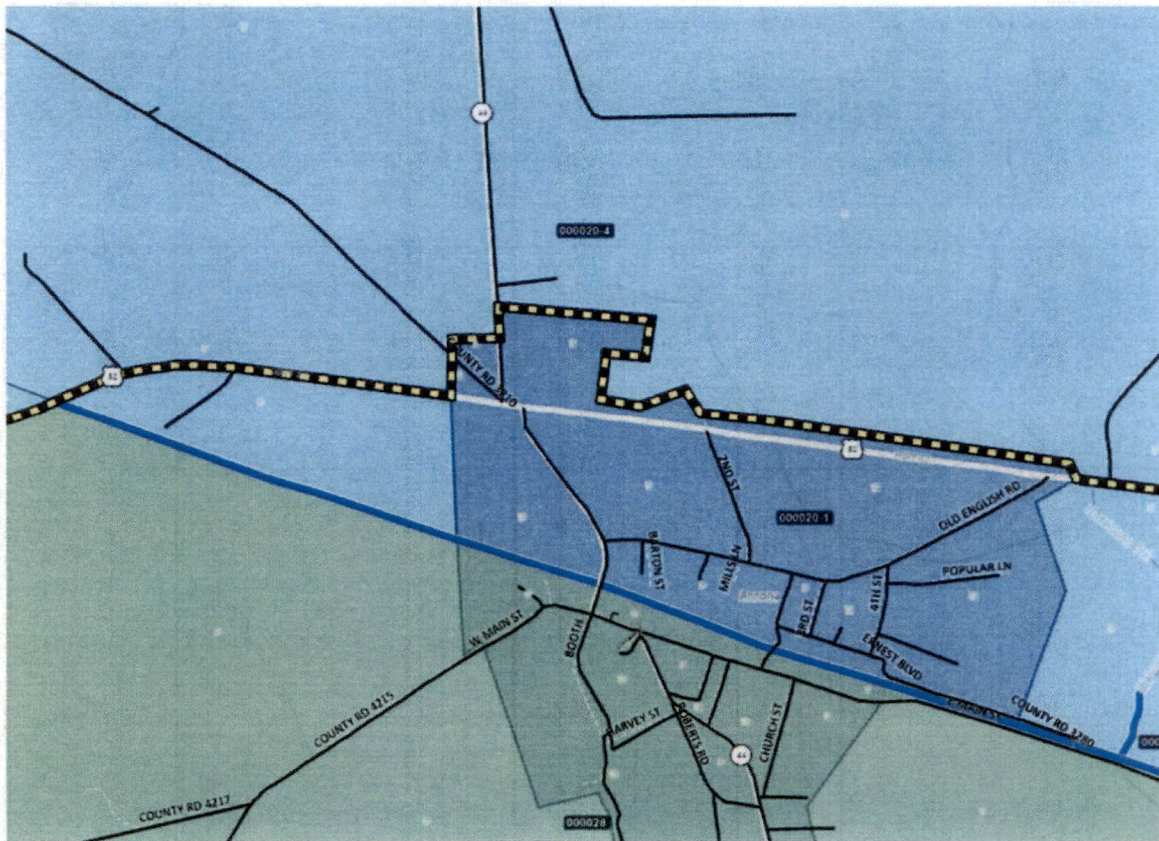




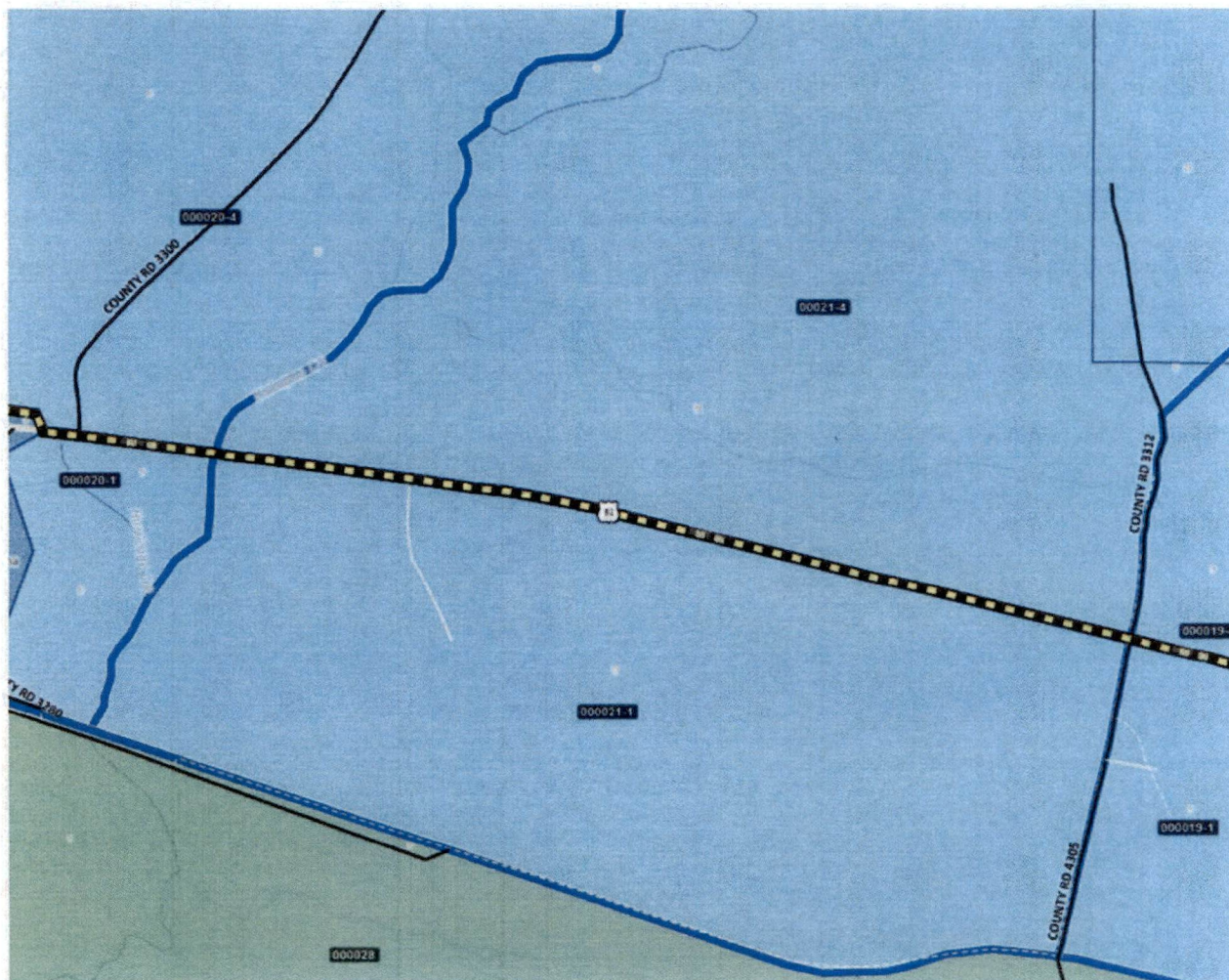
Election precincts 3-4, 20-4



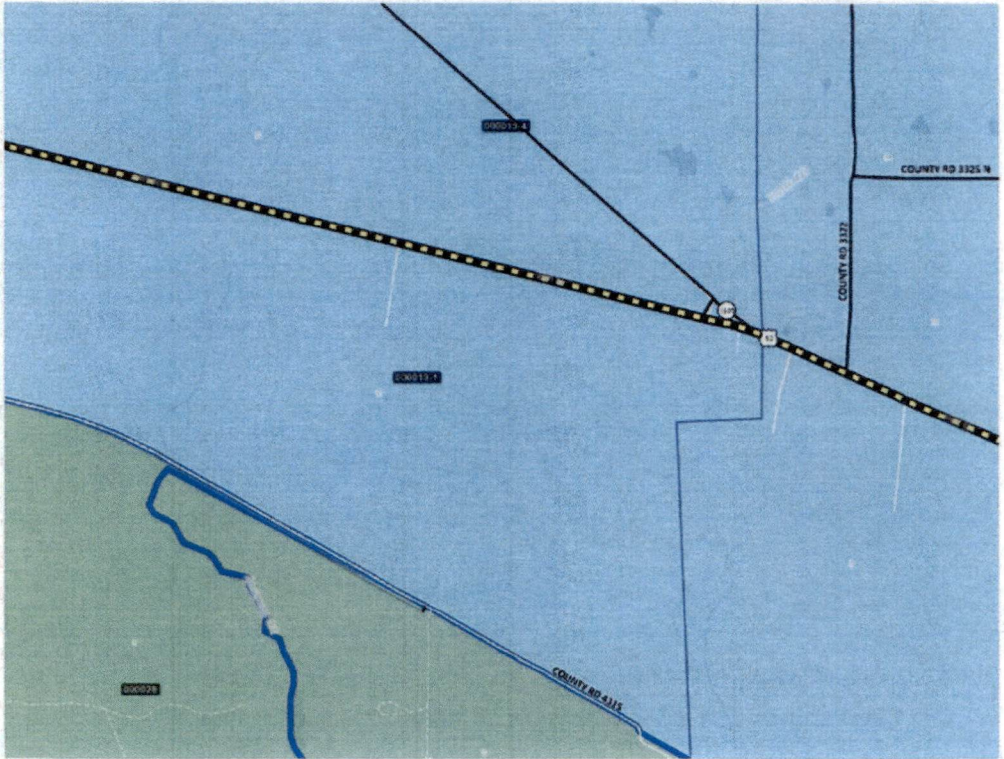
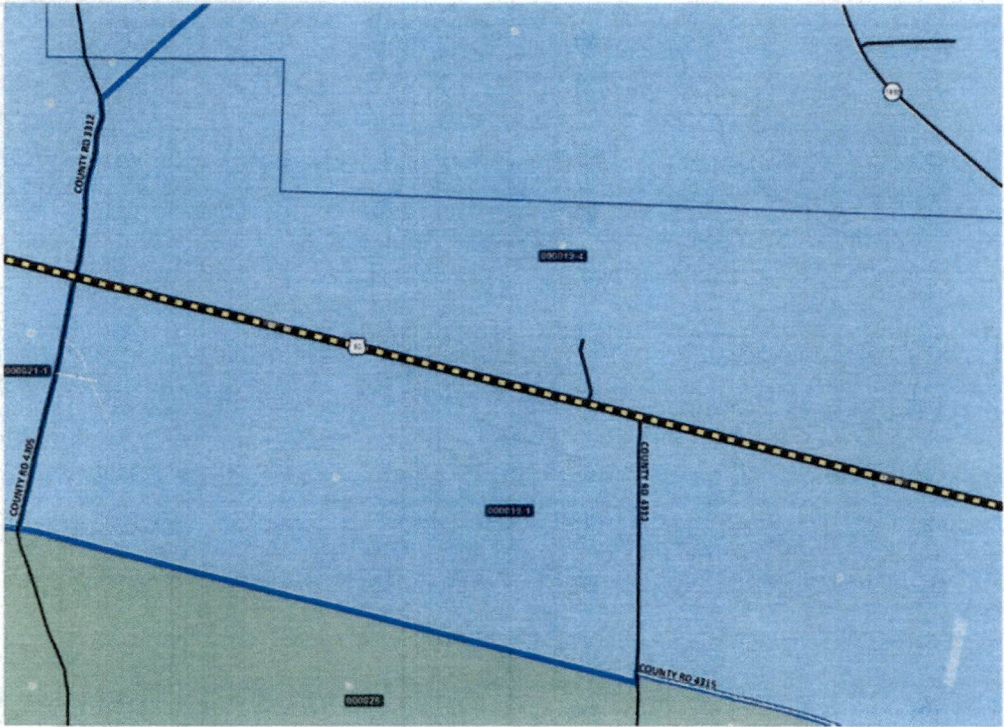
Election Pct. 20-4, 20-1

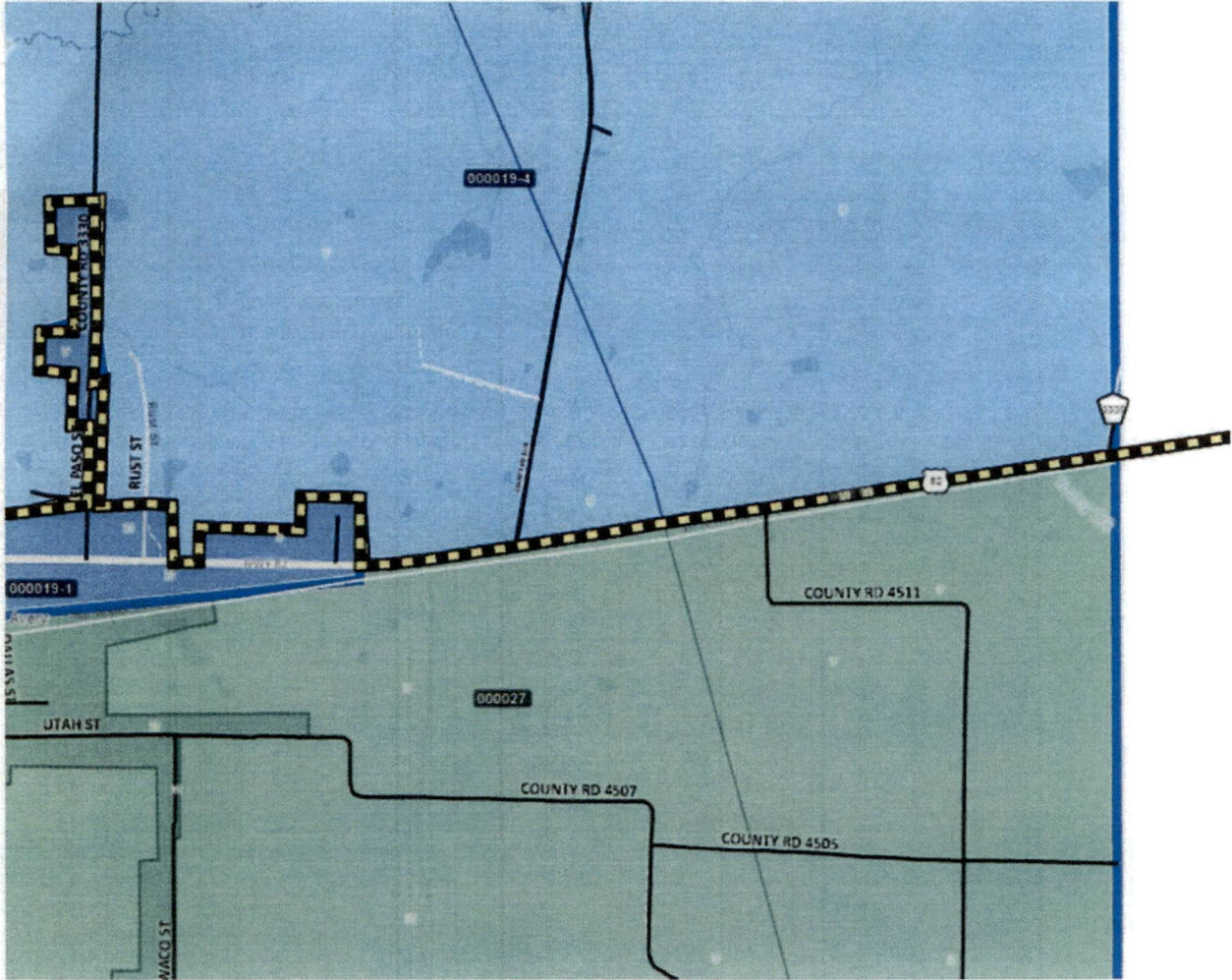


Election Pcts. 21-1, 21-4



Election Pcts. 19-1, 19-4





The Justice of the Peace/Constable Precinct 1 is county-wide and is not affected by these changes.

The above and foregoing changes to Election Precincts shall take effect January 1, 2021, and will remain in effect until changes by further Order of this Commissioners Court.

Date:

David Wilkerson

County Judge

Donna Kelly
Commissioner, Precinct 1

David Hester
Commissioner, Precinct 2

Jeff Mason
Commissioner, Precinct 3

Dan Halley
Commissioner, Precinct 4

Shawn Wlemer
County Clerk



Change red river cp to make this change.

